



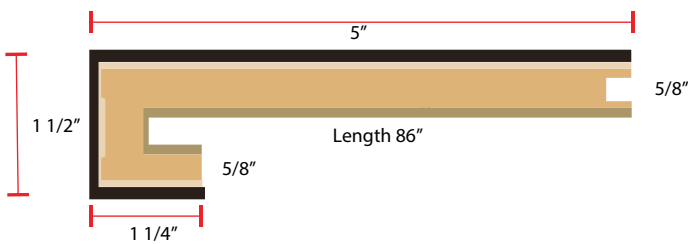
Stairs deserve the same attention to detail and design as your wood flooring. Poor tread construction and color match can cheapen the look of your high end floors. Our fabricated nosing and treads are made with the exact same material as your floor and guarantees the best match possible. The square edge detail on our treads is consistent with current design trends.



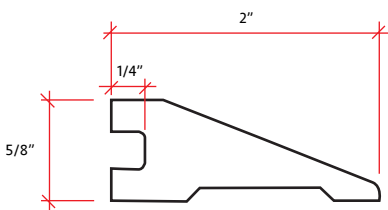
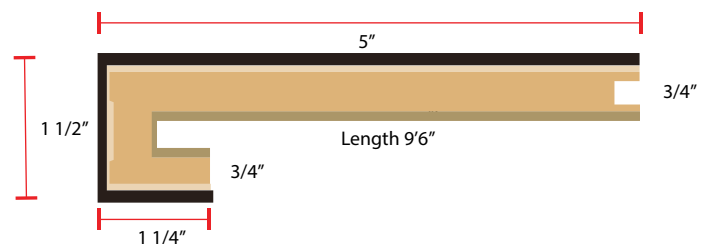
- Offered in Left, Right, Wall-to-Wall, and Open Face returns that come in a 1 1/4" x 1 1/4" width and depth.
- Made from the same material as our floors and can be color matched to your specific choice.
- Square nosing offers a contemporary look and feel.
- We can manufacture our treads in our standard 4 1/4" up to 6".



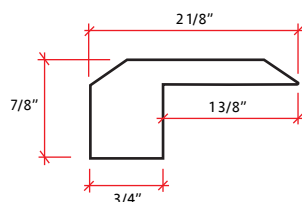
5/8" THICKNESS



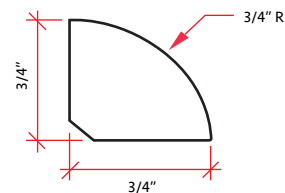
3/4" THICKNESS



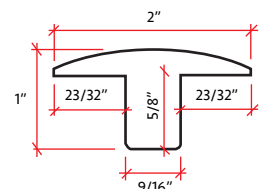
Reducer 78" in Length



Threshold 78" in Length



Quarter Round 96" in Length



T-Molding 78" in Length



COMPLETE DETAILS FOR THIS COLLECTION AVAILABLE AT
www.ArtistryFlooring.com



Certifies flooring and the materials they're made with are in compliance with stringent indoor air quality emissions.

Artistry[®] beats the competition with higher performance, color match, and cutting edge design.

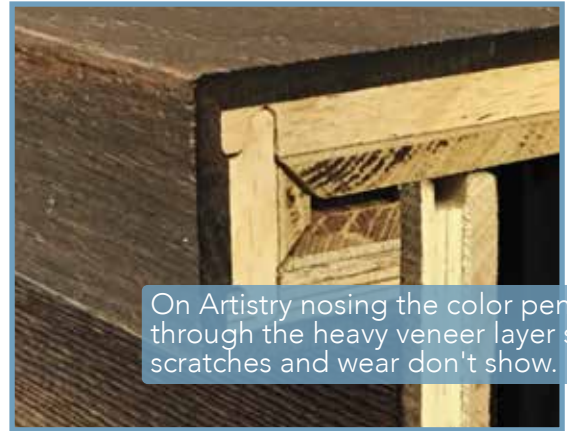
The Competitors



Topical stains easily scratch and wear through exposing raw wood underneath.



On Artistry nosing the color penetrates through the heavy veneer layer so scratches and wear don't show.



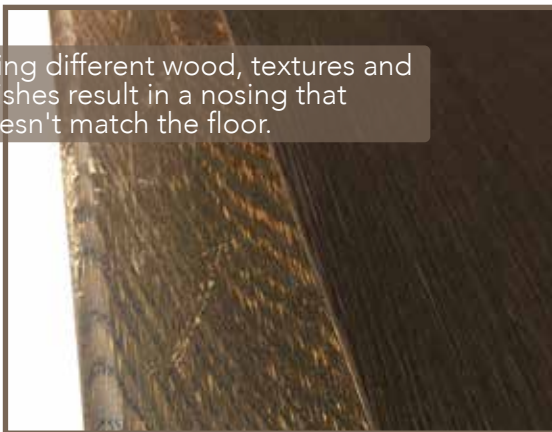
A 3" nosing offer insufficient surface area to adhere to the step and can come loose over time.



Our 5" wide nosing provides adequate surface area for mounting and distribution of weight.



Using different wood, textures and finishes result in a nosing that doesn't match the floor.



Our nosing is made from the exact same material as our floors so the texture and color match is the best it can be.

